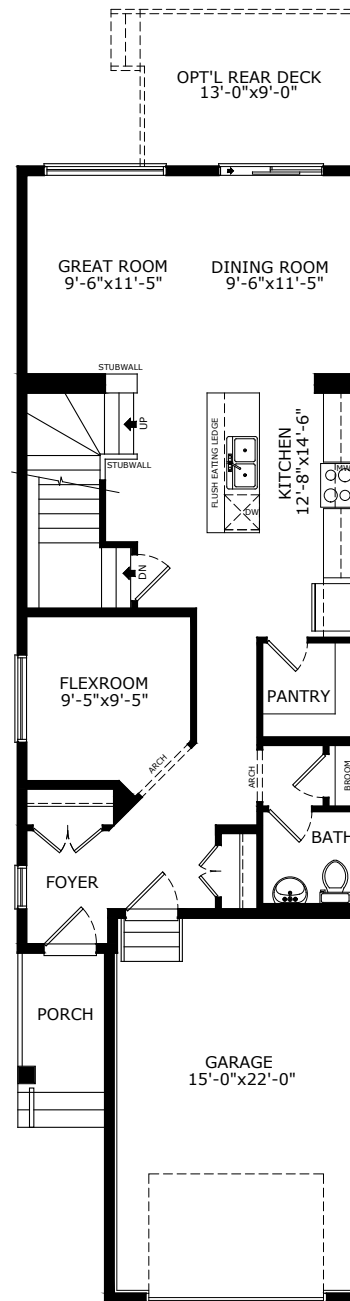
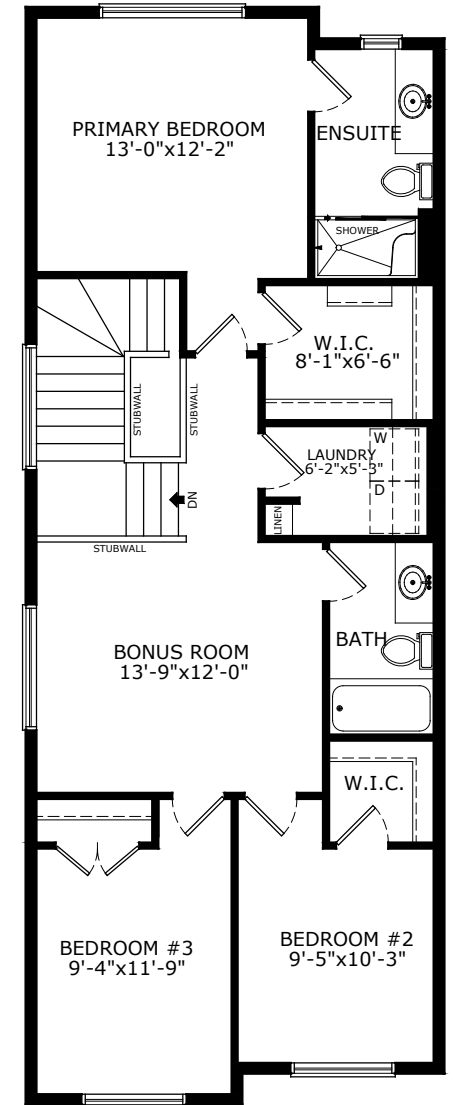


1814 SQ FT
3 BEDS
2.5 BATHS

LUNA



MAIN: 872 SQ FT



UPPER: 942 SQ FT

Sterling HOMES

A QUALICO Company

ELEVATIONS



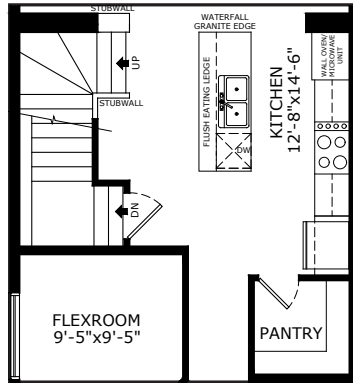
MODERN FARMHOUSE



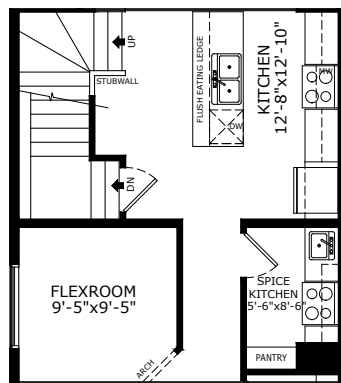
MODERN PRAIRIE

MAIN FLOOR OPTIONS

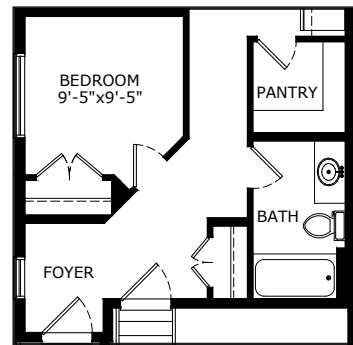
OPTIONAL EXECUTIVE KITCHEN



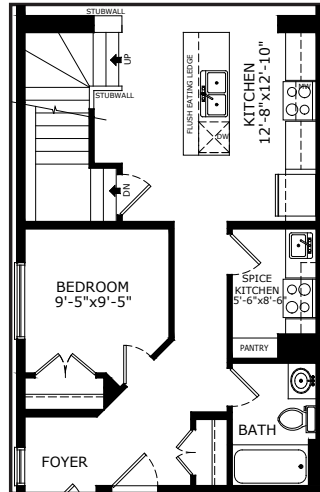
OPTIONAL SPICE KITCHEN



OPTIONAL FULL BATH WITH BEDROOM

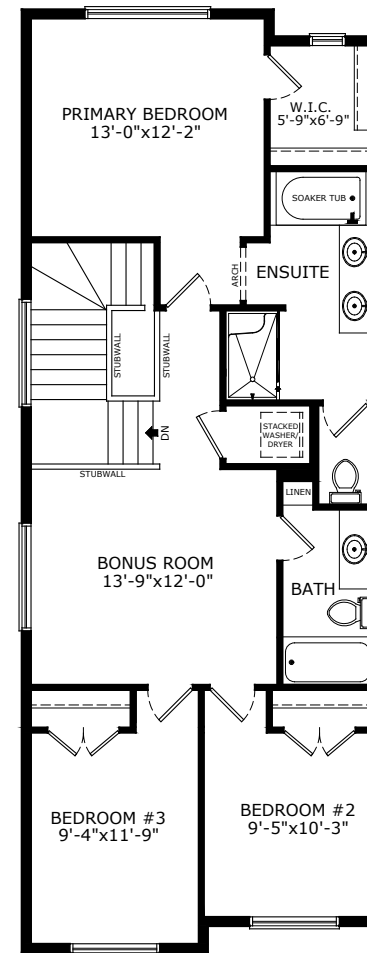


OPTIONAL SPICE KITCHEN & FULL BATH WITH BEDROOM



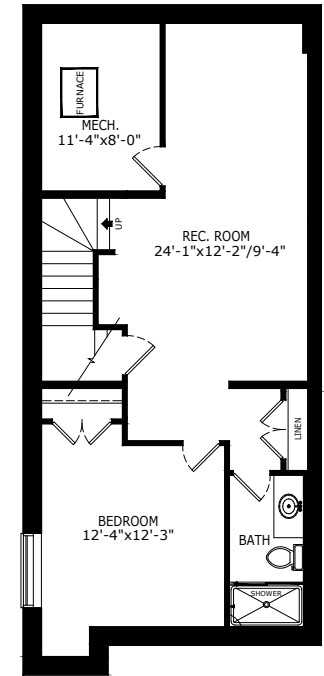
UPPER FLOOR OPTION

OPTIONAL ENSUITE



BASEMENT OPTION

STANDARD 669 SQ FT



Scan here for floorplan options and more

*Legal Suite availability varies by community and municipal regulations.

Build Your Life

STERLINGCALGARY.COM